



550/1100-Lb. Electric Hoist

Owner's Manual



⚠ WARNING: Read and understand all instructions, warnings, and cautions before using this product. Failure to follow the instructions, warnings, and cautions may result in serious personal injury and/or property damage.

Item # 48305

SAVE THESE INSTRUCTIONS

Thank you very much for choosing a Strongway product!

For future reference, please complete the owner's record below:

Serial Number/LotDate Code: _____

Purchase Date: _____

Save the receipt, warranty, and this manual.

This Electric Hoist is designed for certain applications only. The distributor cannot be responsible for issues arising from modification or use of this product in an application for which it was not designed. We strongly recommend that this product not be modified and/or used for any application other than that for which it was designed.

For technical questions, please call **1-800-222-5381**.

Table of Contents

Intended Use.....	4
Technical Specifications	4
Important Safety Information	4
Safety Labels	7
Grounding	8
Extension Cords.....	9
Assembly Instructions.....	10
Before Each Use.....	10
Operating Instructions.....	10
Maintenance	11
Parts Diagram	12
Parts List	13
Replacement Parts	13
Limited Warranty.....	14

Intended Use

This 110v electric hoist quickly and easily lifts or lowers loads with the push of a button.

Technical Specifications

Rated Capacity	550/1100lbs.
Lift Height	40 ft. (550 lbs.)/20ft. (1100 lbs.)
Cable Diameter	1/8in.
Lifting speed	33/16.5FPM
Duty cycle	20% (2 min. per 10min. cycle)
Motor performance	1-3/4HP

Important Safety Information

▲ WARNING

- The warnings, cautions, and instructions in this manual cannot cover all possible conditions or situations that could occur. Exercise common sense and caution when using this tool. Always be aware of the environment and ensure that the tool is used in a safe and responsible manner.
- DO NOT allow persons to assemble or operate this product until they have read this manual and have developed a thorough understanding of how the product works.
- Use the right tool for the job. DO NOT attempt to force small equipment to do the work of larger industrial equipment. There are certain applications for which this equipment was designed. It will do the job better and more safely at the capacity for which it was intended. DO NOT use this equipment for a purpose for which it was not intended.
- Industrial or commercial applications must follow OSHA requirements.

▲ WARNING

WORK AREA SAFETY

- Inspect the work area before each use. Keep the work area clean, dry, free of clutter, and well lit. Cluttered, wet, or dark work areas can result in injury.
- Do not use the tool where there is a risk of causing a fire or an explosion; e.g., in the presence of flammable liquids, gases, or dust. The tool can create sparks, which may ignite the flammable liquids, gases, or dust.
- Do not allow the tool to come into contact with an electrical source. The tool is not insulated and contact will cause electrical shock.
- Keep children and bystanders away from the work area while operating the tool. Do not allow children to handle the tool.
- Be aware of all power lines, electrical circuits, water pipes, and other mechanical hazards in your work area. Some of these hazards may be hidden from your view and may cause personal injury and/or property damage if contacted.

⚠ WARNING

PERSONAL SAFETY

- Stay alert, watch what you are doing, and use common sense when operating the tool. Do not use the tool while you are tired or under the influence of drugs, alcohol, or medication.
- Dress properly. Do not wear loose clothing, dangling objects, or jewelry. Keep your hair, clothing and gloves away from moving parts. Loose clothes, jewelry, or long hair can be caught in moving parts. Air vents on the tool often cover moving parts and should be avoided.
- Use safety apparel and equipment. Use ANSI-approved safety goggles or safety glasses with side shields, or when needed, a face shield. Use a dust mask in dusty work conditions. Also use non-skid safety shoes, hardhat, gloves, dust collection systems, and hearing protection when appropriate. This applies to all persons in the work area.
- Do not overreach. Keep proper footing and balance at all times.
- Remove adjusting keys or wrenches before connecting the tool to the power supply or turning on the tool. A wrench or key that is left attached to a rotating part of the tool may cause personal injury.
- Secure the work with clamps or a vise instead of your hand when practical. This safety precaution allows for proper tool operation using both hands.

⚠ WARNING

ELECTRICAL SAFETY

- Grounded tools must be plugged into an outlet properly installed and grounded in accordance with all codes and ordinances. Never remove the grounding prong or modify the plug in any way. Do not use any adapter plugs. Check with a qualified electrician if you are in doubt as to whether the outlet is properly grounded. If the tools should electrically malfunction or break down, grounding provides a low resistance path to carry electricity away from the user.
- Avoid body contact with grounded surfaces such as pipes, radiators, ranges, and refrigerators. There is an increased risk of electric shock if your body is grounded.
- Do not expose power tools to rain or wet conditions. Water entering a power tool will increase the risk of electric shock.
- Do not abuse the Power Cord. Never use the Power Cord to carry the tools or pull the Plug from an outlet. Keep the Power Cord away from heat, oil, sharp edges, or moving parts. Replace damaged Power Cords immediately. Damaged Power Cords increase the risk of electric shock.
- When operating a power tool outside, use an outdoor extension cord marked "W-A" or "W". These extension cords are rated for outdoor use, and reduce the risk of electric shock.

⚠ WARNING

HOISTS SAFETY

- Do not force the Hoist. Hoists do a better and safer job when used in the manner for which they are designed. Plan your work, and use the correct Hoist for the job.
- Check for damaged parts before each use. Carefully check that the Hoist will operate properly and perform its intended function. Replace damaged or worn parts immediately. Never operate the Hoist with a damaged part.
- Do not use a Hoist with a malfunctioning power switch. Any Hoist that cannot be controlled with the power switch is dangerous and must be repaired by an authorized service representative before using.
- Disconnect the power supply from the Hoist and place the power switch in the locked or off position before making any adjustments, changing accessories, or storing the Hoist. Such preventive safety measures reduce the risk of starting the Hoist accidentally.
- Do not exceed the rated load capacity of the hoist.
- Only operate the hoist when the load is centered under the hoist.
- Inspect the cable and hook before each use. Only operate the hoist when the cable is in good working condition. Do not use the hoist if the cable is twisted, kinked, or damaged. Be sure the cable is properly seated in its groove before operation. Do not reverse-wrap the cable on the drum. The up switch should always lift the load. Always leave a minimum of 4 wraps of cable on the drum. The fastener between the cable and hoist is not rated for maximum capacity. Hooks that are bent, worn or whose opening is enlarged beyond normal throat opening should not be used.
- Do not use the cable as a sling or wrap the cable around a load.
- Store the Hoist when it is not in use. Store it in a dry, secure place out of the reach of children. Inspect the Hoist for good working condition prior to storage and before re-use.
- Use only accessories that are recommended by the distributor for use with the Hoist.
- Do not leave the Hoist running unattended.
- Maintain labels and nameplates on the hoist. These carry important information. If unreadable or missing, contact the distributor.
- Always keep the extension cord away from moving parts on the hoist.
- Keep children away. Not for use by or around children.
- Keep bystanders away. Do not stand under the load. Do not lift the load over people or animals. Do not use the hoist to lift people or animals.
- Do not operate the hoist in wet conditions. Do not allow the hoist to freeze.
- If pushing the lift button continually does not have any effect, do not continue. This is a sign that the load exceeds the maximum capacity.
- If the hoist is stopped during the lowering of a load it is normal for the load to drop a few inches more due to inertia.
- The hoist motor does not have an overload cut-out. If you are unable to hoist a load and the load is less than the maximum lift capacity, stop the hoist and allow the motor to cool.
- Do not leave load suspended in the air unattended. Do not allow load to swing or twist while hoisting.
- Do not allow a load to bear against the hook latch. Allowing a load to bear against the hook latch can result in loss of load.

Safety Labels

WARNING

- Do not exceed rated load capacity.
- Only operate the hoist when the load is centered under the hoist.
- Inspect the rope before each use. Only operate the hoist when the rope is in good working condition. Do not use if it is twisted, kinked, or damaged.
- Inspect the hoist before each use. Do not use if it is damaged or malfunctioning in any way.
- Not intended to lift people or animals. Lifting people may result in severe injury or death.
- Keep bystanders away. Do not control hoist under load. Do not lift load over people.
- Ensure rope is properly seated in its groove before operation.
- Do not reverse wrap cable in drum. The up switch should always lift the load.
- Always leave a minimum of 4 wraps on the drum. The fastener between the cable and hoist is not rated for maximum capacity.
- Do not remove or cover this warning label. Ensure that it is in plain sight during operation.
- Keep children away. Not for use by or around children.

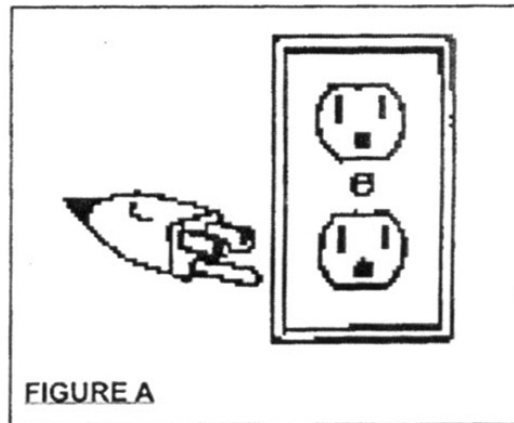
Grounding

Grounded Tools: Tools with 3-Prong Plugs

Tools marked with **Grounding Required** have a 3-wire cord and 3-prong grounding plug. The plug must be connected to a properly grounded outlet. If the tool should electrically malfunction or break down, grounding provides a low resistance path to carry electricity away from the user, reducing the risk of electric shock. (See Figure A.)

The grounding prong in the plug is connected through the green wire inside the cord to the grounding system in the tool. The green wire in the cord must be the only wire connected to the tool's grounding system and must never be attached to an electrically live terminal. (See Figure A.)

Your tool must be plugged into an appropriate outlet, properly installed and grounded in accordance with all codes and ordinances. The plug and outlet should look like those in the following illustration.



Extension Cords

- Grounded tools require a 3-wire extension cord.
- As the distance from the supply outlet increases, you must use a heavier gauge extension cord. Using extension cords with inadequately sized wire causes a serious drop in voltage, resulting in loss of power and possible tool damage.
- The smaller the gauge number of the wire, the greater the capacity of the cord. For example, a 14-gauge cord can carry a higher current than a 16-gauge cord.
- When using more than one extension cord to make up the total length, make sure each cord contains at least the minimum wire size required.
- If you are using one extension cord for more than one tool, add the nameplate amperes and use the sum to determine the required minimum cord size.
- If you are using an extension cord outdoors, make sure it is marked with the suffix **W-A** (**W** in Canada) to indicate it is acceptable for outdoor use.
- Make sure your extension cord is properly wired and in good electrical condition. Always replace a damaged extension cord or have it repaired by a qualified electrician before using it.
- Protect your extension cords from sharp objects, excessive heat, and damp or wet areas.

Assembly Instructions

- The Hoist is designed to be attached to a beam or steel pipe and securely held in place by two Hangers (55).
- The beam or steel pipe must be capable of carrying several times the maximum load capacity of the hoist *plus* the weight of the hoist itself. If in doubt about the carrying capacity of the beam or pipe, consult an engineer.
- The beam or pipe must fit inside of the Hangers.
- Ideally, the hoist should be located so that its power cord reaches a 3-prong grounded power outlet without the need of an extension cord. However, if an extension cord is needed, make sure that the extension cord is the proper size.
- Make sure that the area underneath and around the hoist is clear of objects.
- To mount the hoist on the beam or steel pipe, have a second person hold the top of the hoist flush against the beam or pipe. Line up the holes on each Hanger with the holes on the top of the hoist. Securely fasten the Hangers to the Hoist with Hexagon Bolts (1), Spring Washers (2), and Flat Washers (3).
- For 2-line operation, attach the pulley hook (37) to the wire rope (46) with bolts and nuts on the pulley hook (37), and then attach the hook (44) to the Hook Hanger (54).

Before Each Use

Before each use, inspect the general condition of the hoist. Check for loose screws, misalignment or binding of moving parts, cracked or broken parts, damaged electrical wiring, and any other condition that may affect its safe operation. If abnormal noise or vibration occurs, have the problem corrected before further use. Do not use damaged equipment.

Operating Instructions

1. Make sure that the Wire Rope (46) flows through the Limiter (43) and that the Block (47) is securely attached to the end of the Wire Rope.
2. Connect the Hoist to the power supply.
3. Press the Main Switch (35) toward the **Down** position to lower the Hook (44) to the load.
4. Attach the load to the Hook. The Safety Tab on the Hook must latch or close over the attachment point. Make sure that the attachment point on the load is capable of holding the weight of the entire load. If you are not sure, use a separate cable (not included) that is rated above maximum lift load capacity to surround the load and tie it off securely. Then, attach the load to the Hook.



WARNING: Make sure no people or animals are near the immediate area. Never support a load over people or animals.

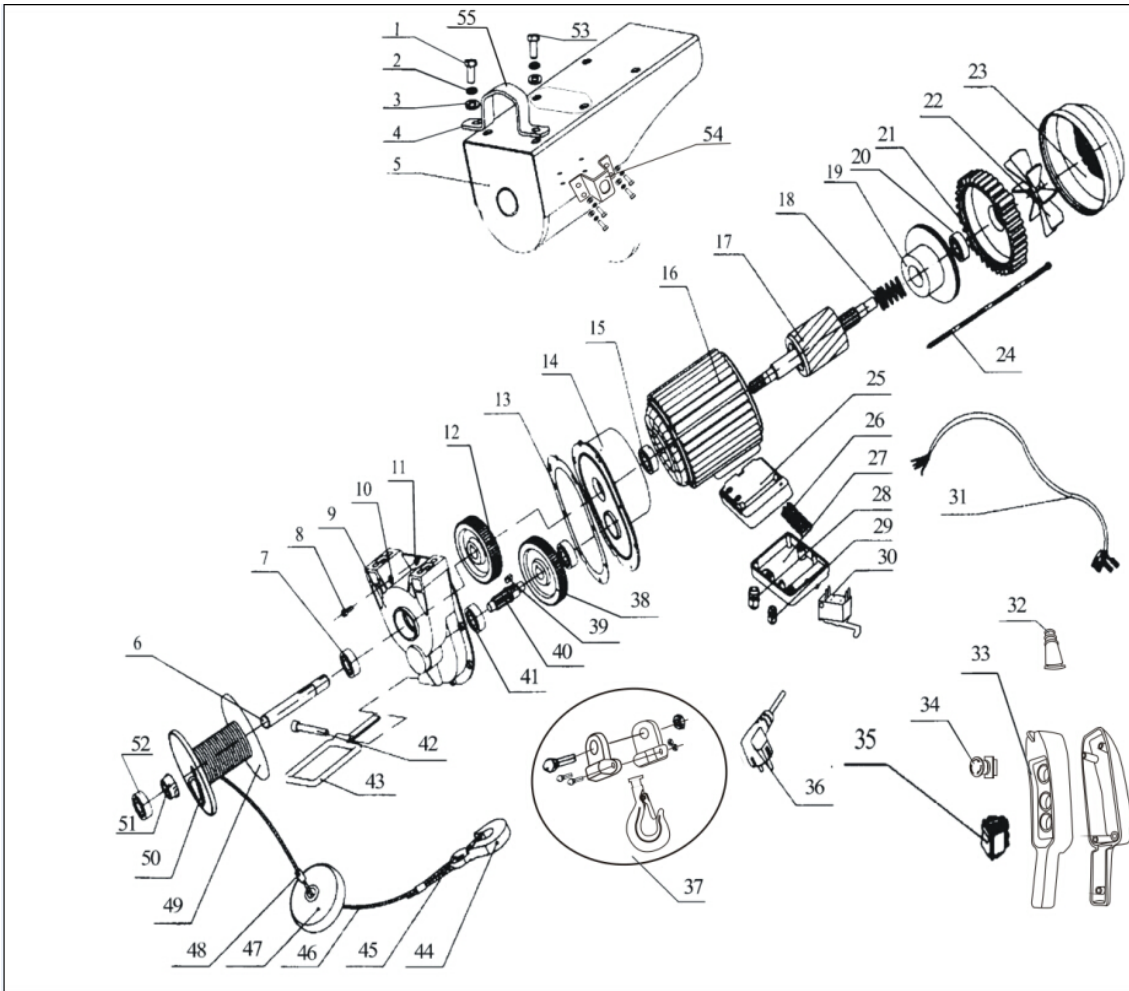
5. Stand clear of the load and push the Main Switch toward the **Lift** position. Slowly raise the load only enough to clear the floor or support and then check to be sure the load is securely fastened. Proceed lifting only after you are certain that the load is secure and free of all obstructions. If the load weighs less than the maximum capacity of the Hoist and the Hoist stops on its own, release the Main Switch and stay clear while the motor has sufficient time to cool. When the motor has cooled, resume lifting the load.
6. To lower the load, press the Main Switch toward the **Down** position.
7. When the load is resting firmly on the ground, remove the load from the Hook.
8. Push the Main Switch toward the **Lift** position and bring the Block up to within a few inches of the Limiter.
9. Disconnect the Hoist from the power supply.

Maintenance

Maintain your Hoist by adopting a program of conscientious repair and maintenance in accordance with the following recommended procedures:

- Wipe the Hoist with a lint free cloth.
- Check the cable for tears, excessive wearing, damage or frays. If you find any, do not use the Hoist until the cable is replaced by a qualified technician. Only use genuine replacement cable. Do not substitute rope or any other type of cable.
- Periodically lubricate the cable with light oil.

Parts Diagram



Parts List

No.	Description	No.	Description
1	Hexagon bolt	28	Holding fixture
2	Spring washer	29	Holding fixture
3	Flat washer	30	Limit switch
4	Fixing ring	31	Control cable
5	Support structure	32	Waterproof rubber ring
6	Rope roll shaft	33	Remote control handle cover
7	Bearing	34	Emergency stop switch
8	Hexagon fillister head screw	35	Remote control switch
9	Gearcase	36	Power cord
10	Spring washer	37	Shackle hook
11	Flat washer	38	Gearwheel
12	Gearwheel	39	Flat key
13	Cushion board	40	Gear shaft
14	Front cover	41	Bearing
15	Bearing	42	Hexagon fillister head screw
16	Stator with shell	43	Limiter
17	Rotor	44	Hook
18	Brake spring	45	Rope thimble
19	Brake component	46	Wire rope
20	Bearing	47	Block
21	Back end cover	48	Aluminum pipe
22	Fan blade	49	Rope roll
23	Fan cover	50	Wedge
24	Hexagon bolt	51	Bushing
25	Junction box	52	Bearing
26	Wiring terminal	53	Hexagon bolt
27	Terminal cover	54	Hook hanger
		55	Hanger

Replacement Parts

- For replacement parts and technical questions, please call Customer Service at **1-800-222-5381**.
- Not all product components are available for replacement. The illustrations provided are a convenient reference to the location and position of parts in the assembly sequence.
- When ordering parts, the following will be required: Model Number, Serial Number/Lot Date Code, and Description.
- The distributor reserves the rights to make design changes and/or improvements to product lines and manuals without notice.

Limited Warranty

Northern Tool and Equipment Company, Inc. ("We" or "Us") warrants to the original purchaser only ("You" or "Your") that the Strongway product purchased will be free from material defects in both materials and workmanship, normal wear and tear excepted, for a period of **one year** from date of purchase. The foregoing warranty is valid only if the installation and use of the product is strictly in accordance with product instructions. There are no other warranties, express or implied, including the warranty of merchantability or fitness for a particular purpose. If the product does not comply with this limited warranty, Your sole and exclusive remedy is that We will, at our sole option and within a commercially reasonable time, either replace the product or product component without charge to You or refund the purchase price (less shipping). This limited warranty is not transferable.

Limitations on the Warranty

This limited warranty does not cover: (a) normal wear and tear; (b) damage through abuse, neglect, misuse, or as a result of any accident or in any other manner; (c) damage from misapplication, overloading, or improper installation; (d) improper maintenance and repair; and (e) product alteration in any manner by anyone other than Us, with the sole exception of alterations made pursuant to product instructions and in a workmanlike manner.

Obligations of Purchaser

You must retain Your product purchase receipt to verify date of purchase and that You are the original purchaser. To make a warranty claim, contact Us at 1-800-222-5381, identify the product by make and model number, and follow the claim instructions that will be provided. The product and the purchase receipt must be provided to Us in order to process Your warranty claim. Any returned product that is replaced or refunded by Us becomes our property. You will be responsible for return shipping costs or costs related to Your return visit to a retail store.

Remedy Limits

Product or product component replacement or a refund of the purchase price is Your sole remedy under this limited warranty or any other warranty related to the product. We shall not be liable for: service or labor charges or damage to Your trailer incurred in removing or replacing the product; any damages, including, without limitation, damages to tangible personal property or personal injury, related to Your improper use, installation, or maintenance of the product; or any indirect, incidental or consequential damages of any kind for any reason.

Assumption of Risk

You acknowledge and agree that any use of the product for any purpose other than the specified use(s) stated in the product instructions is at Your own risk.

Governing Law

This limited warranty gives You specific legal rights, and You also may have other rights which vary from state to state. Some states do not allow limitations or exclusions on implied warranties or incidental or consequential damages, so the above limitations may not apply to You. This limited warranty is governed by the laws of the State of Minnesota, without regard to rules pertaining to conflicts of law. The state courts located in Dakota County, Minnesota shall have exclusive jurisdiction for any disputes relating to this warranty.



Distributed by
Northern Tool and Equipment Company, Inc.
Burnsville, Minnesota 55306
NorthernTool.com

Made in China